

ARCELMED[®]

Dermal Peptide Power Mask



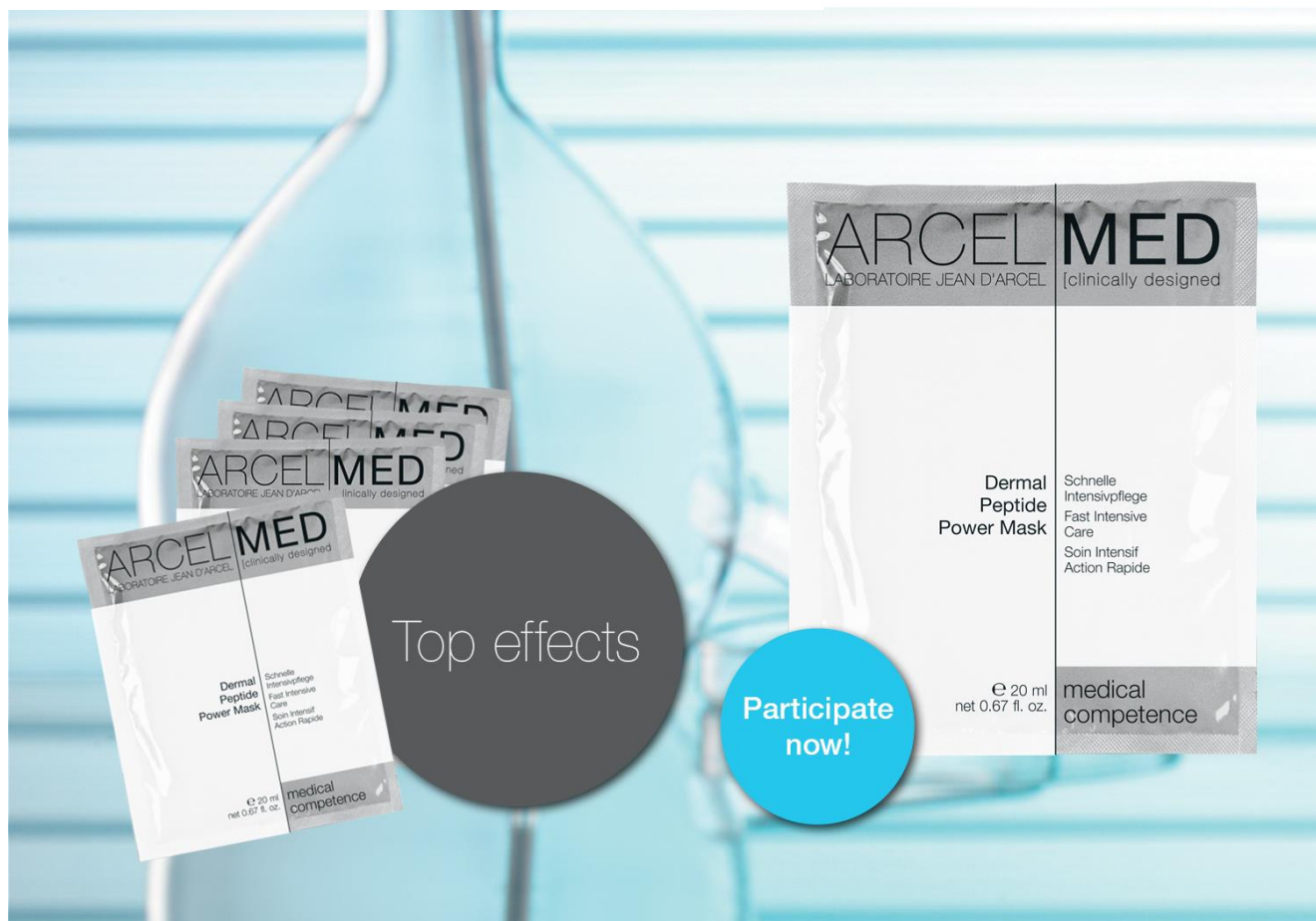
**with instand
tightening and repair effect**

Quick intensive care for every skin type

ARCELMED®

Dermal Peptide Power Mask


JEAN D'ARCEL
COSMETIQUE
BEAUTY IS OUR PROFESSION



Based on patented and clinically proven active substances:

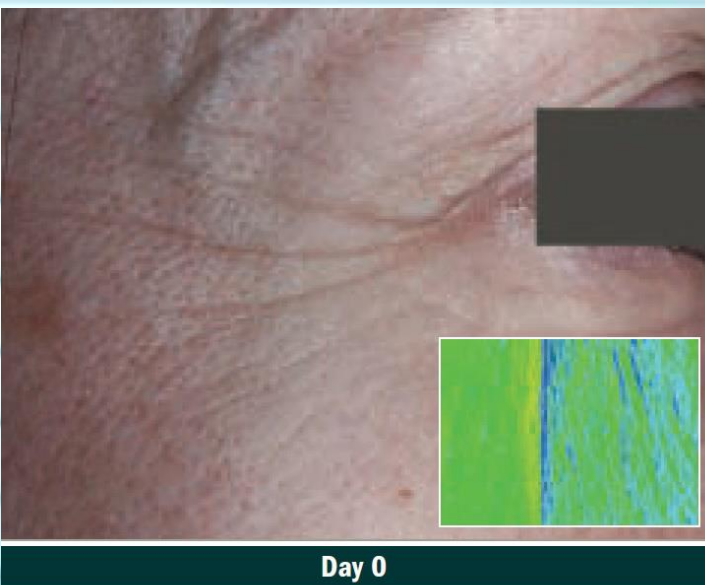
- **Collaxyl® IS;**
Collagen hexapeptide to significantly reduce the length and depth of wrinkles.
- **Fibrocell®**
Fibronectin peptide with instant repair effect on the cement substance.
- **Plankton extract – GP4G®**
A unique plankton extract, rich in GP4G nucleotides, that helps protect skin from environmental shocks such as temperature shocks, ultraviolet and infrared rays.

Cosmetic Competence



Proven efficacy:

- ✓ Extremely **skin regeneration** at dermal level
- ✓ Dermal tissue **repair**
- ✓ Collagen synthesis and dermal regeneration
- ✓ Rapidly decreases the appearance of **deep** skin wrinkles after **10 minutes**
- ✓ Total environmental protection care (UV, IR, external aggressions)
- ✓ Improvement of hydration after **3 hour's up to +155%**



	Total surface (mm ²)	Number of wrinkles	Total length (mm)	Average depth (µm)
PLACEBO (D28 - D0)	+ 0.6	+ 5.2	+ 4.8	+ 6
Dermal Peptide Power Mask (D28 - D0)	- 0.6	- 3.9	- 5.3	- 5.2

ARCELMED®

Dermal Peptide Power Mask



How to use:

Remove the fleece from the packaging, unfold and place on the cleansed face. First of all fix the mask under the eyes, then place it on the forehead and cheeks and lastly fix the mouth and chin. Leave the mask to work for 15-25 min. as required. Then remove from the face from bottom to top.

Can work very well with ultrasound on the fleece. If the skin is very dry and the moisture soaks in very quickly, it can be too dry for the ultrasound treatment.

Then, simply apply some preventive Aloe Vera Gel to the fleece and continue ultrasound.